



Since : 2000

ISO 9001:2008 Certified Co.

# **EOT Crane DSL BUSBAR Systems**

## **FESTOON Systems**

## **BOX TYPE DSL Systems**

## **PENDANT Stations**



# DSL Shrouded Busbar System

## PINJOINT BUSBAR (M Type 100-315 Amps)

Conductor Busbar System	Galvanized	Copper	Aluminum / SS
Current (A)	60 - 125 amp	160-400 amp	200-315 amp



4 Pole Hanger  
(M Type)



1 Pole  
Hanger



Joint Cover



Copper Shoe  
with Holder



## BOLT JOINT BUSBAR (W Type 60-400 Amps)

Conductor Busbar System	Galvanized	Copper
Current (A)	80-125 amp	160-315 amp



4 Pole Hanger  
(W Type)



3 Pole Hanger



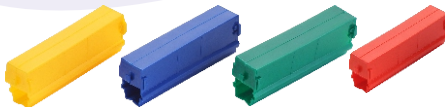
1 Pole  
Hanger



Single Collector  
Bracket



Steel Jointer



Joint Cover



End Power feed



End Cap



Towing Bracket



Steel Jointer



Copper Jointer



250 A Current Collectors



Current Collector

# Current Collector For EOT Crane



## FEATURES :

- | Easy and Safe to Connect
- | Top Quality
- | Economical prices
- | High strength
- | Better Performance
- | Compact Size
- | Good Control
- | Power Efficient
- | Touch Proof
- | Safe to Handle

### **Model No. SRP CC-01** **Current Collector (60A To 125A)**

- Current Collector is Capable of Moving on Railcar, Over Head Traveler and Tower Crane.
- Our Current Collector Fulfill all Requirements of our Customer.
- Detailed analysis and research is done.
- Our Entire Range is Corrosion Resistant and Provide Long Lasting Performance.
- 100% Parts are Manufactured Using Premium Quality Components and High Technology.
- We are Leading Manufacturer In all over India.
- Manufacturer of current collector, current collector head, copper shoes of current collector. Also available as spare component.
- **250 Amp., 500 Amp. and other type of current collector are Also available.**

# Festoon System

## C RAIL FESTOON SYSTEM

Festoon systems are used to manage electrical cable on over head cranes for transmission of power & control cables. They are low resistance method for distributing power to hoists, cranes, trolleys, and any number of different types of moving equipment.



## FESTOON SYSTEM ACCESSORIES

- Fixed End Junction Box
- Terminal Strips(Inside Junction box)
- Cable Connectors
- End Clamp
- Track hanger Clamp Assemble
- Intermediate Trolley
- Cross Arm Support Channels
- Beam Clamp  
(For cross arm support channels)
- C-Track Channel
- Control Unit Trolley with J-Box, OR Quick disconnect control unit Trolley(Not Shown)
- Track Joint Assembly
- Penant Cable
- Push-Button Pendant Station
- Tow Arm
- Tow Trolley
- Flat PVC Cable
- End Stop

### Applications of C Rail Festoon System :

- Overhead Cranes & Port Cranes
- To Electrify Many Mobile Equipments.
- Any other Material handling equipments.

- Features :**
- Light Weighted
  - Less Friction & Smooth Motion
  - Simple & Safe installation



Square Clamp



Hanger Clamp



Steel Hanger



Towing Trolley



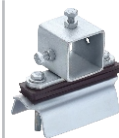
Track Couplers



End Cap



Towing Arm



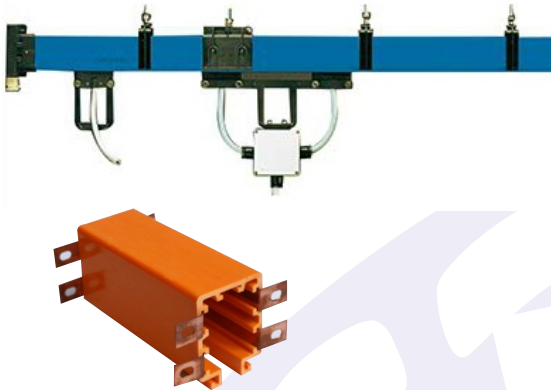
Towing Trolley



Steel Trolley

# Box Type DSL System

## FEATURES :



- | Compact Design
- | Multi Conductor
- | Easy Installation
- | Efficient in power distribution
- | Multi Colors Availability
- | User Safely
- | Flexible for indoor or outdoor installation

## Pendent Stations

## FEATURES :

- | Best Engineering Materials
- | Easy to Operate
- | User Safely
- | Efficient in power distribution



### Our Vision :-

- All the manufacturing units will be eco-friendly and will have desired, comfortable work spaces for employees.
- We will diversify our products and services and continue to expand world wide
- Our Products Having Reliability, corrosion Resistance & Perfect Finish



We serve the following industrial sectors...



Automobile Industries



Ports



Crane Industries



Power Plant



Chemical Industries

## Shree Ram Plastic

(An ISO 9001:2008 Certified Company)

**Office :** Umijaji Estate, Gokul Nagar - 2,  
Gokuldhama Main Road,  
Rajkot-360 004(GUJARAT) INDIA.

**Mo.** 📞 94288 94066, 80007 88873

**Workshop :** Kothariya Solvant, Plot No. 60, Sv.No. 259,  
Railway Cross Line, Vardhman Industrial Area,  
Gondal Road, N.H. - 8-B, Kothariya - 360 022.  
Rajkot (GUJARAT) **Mo. 99797 13107**

🌐 [www.shreeramplastic.com](http://www.shreeramplastic.com)  
[www.eotcranebusbar.com](http://www.eotcranebusbar.com)  
✉ [info@shreeramplastic.com](mailto:info@shreeramplastic.com)  
[sales@shreeramplastic.com](mailto:sales@shreeramplastic.com)



एन. एस. आई. सी.  
**NSIC**  
ISO 9001 : 2008



Dealer's Stamp